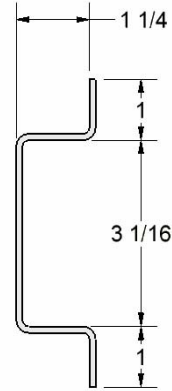
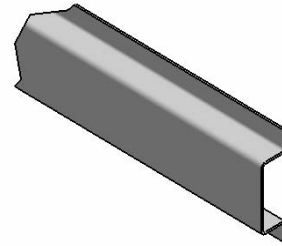
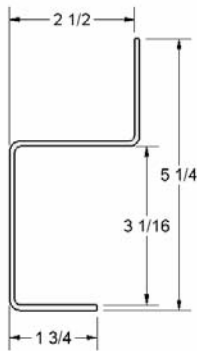
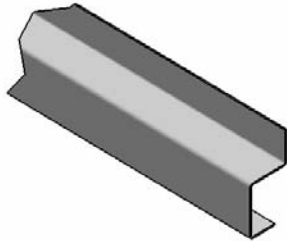


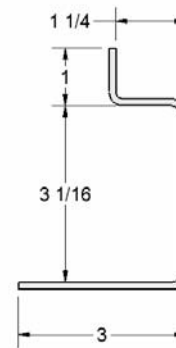
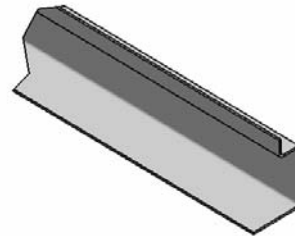
**PART 5062
RUB RAIL**



**PART 5043
RUB RAIL
12 GA.**

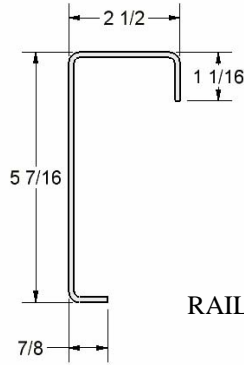
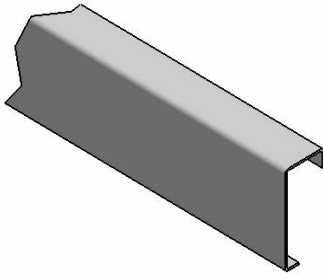


**PART 5050
RUB RAIL
11 GA.**



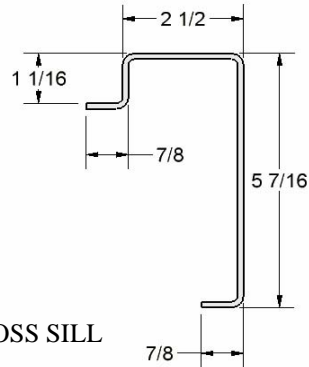
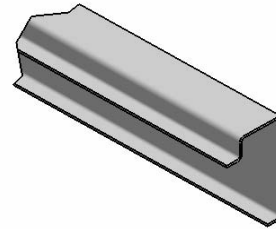
**PART 5239
RUB RAIL
12 GA.**

OTHER SIZES & MATERIALS ARE AVAILABLE ON REQUEST

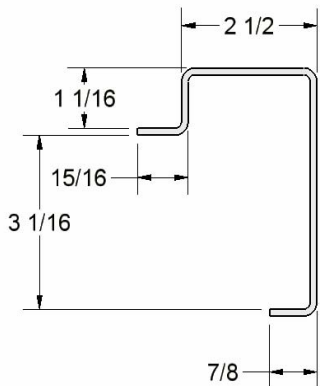
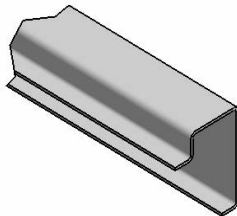


RAILS ACCOMMODATE 3" OR 4" CROSS SILL

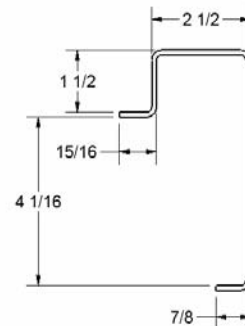
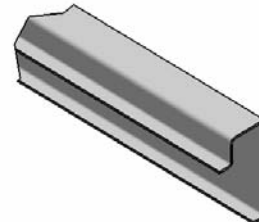
**PART 5073
PUNCHED SIDE RAIL
11 GA.**



**PART 5074
PUNCHED END RAIL
11 GA.**



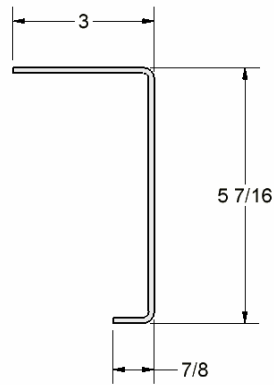
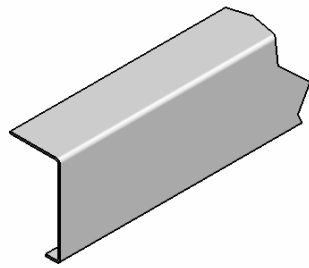
**PART 5044
RUB RAIL
11 GA.**



**PART 5045
RUB RAIL
11 GA.**

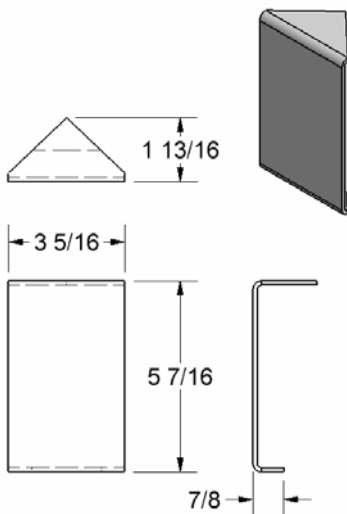
THESE PARTS CAN BE SUPPLIED WITH STAKE POCKET HOLES PUNCHED.

OTHER SIZES & MATERIALS ARE AVAILABLE ON REQUEST

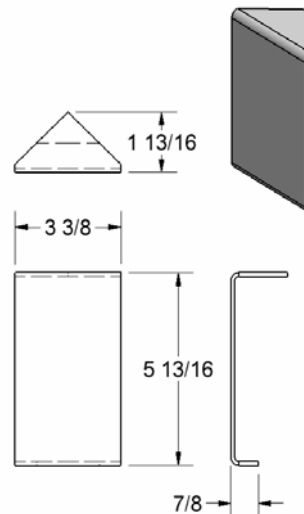


**PART 5245
STEEL DECK RUB RAIL
11 GA.**

CAN BE SUPPLIED WITH STAKE POCKET HOLES PUNCHED.

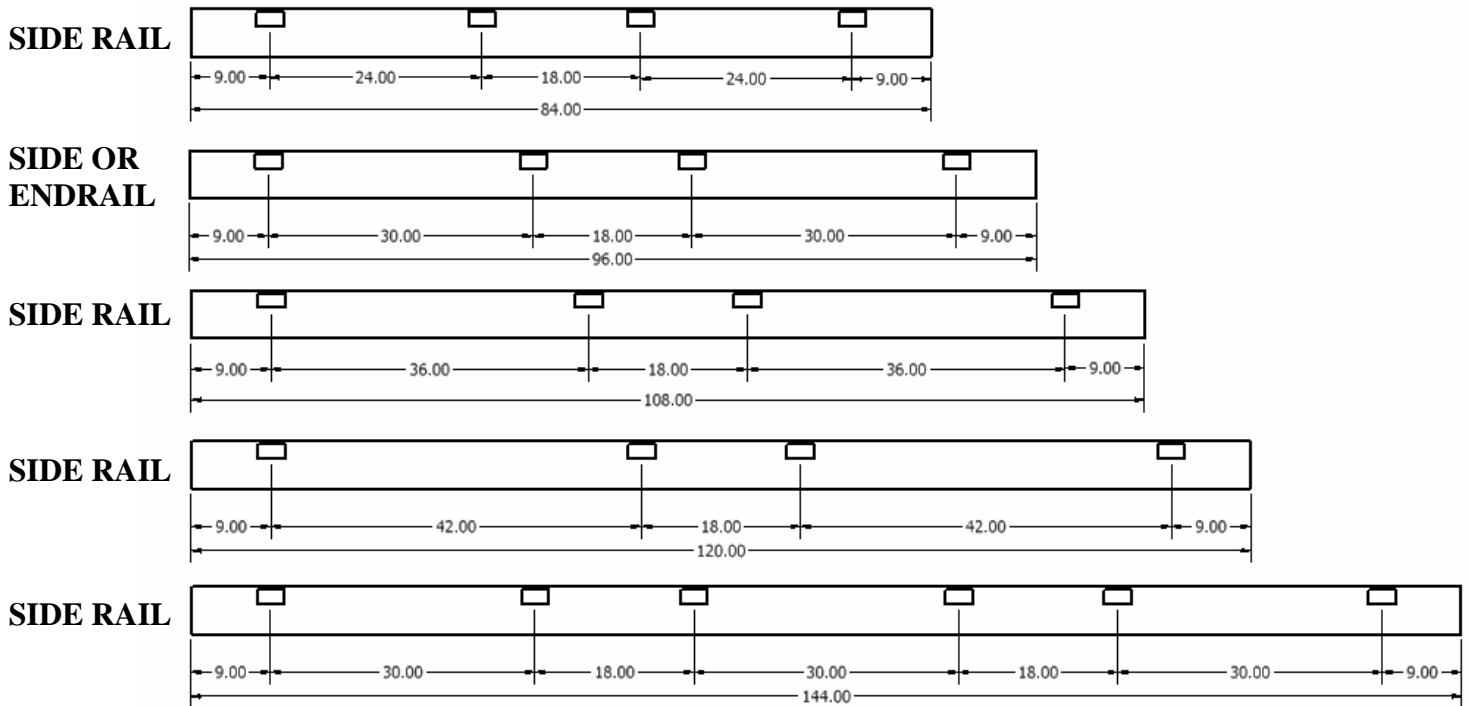


**PART 5075
SIDE & END CORNER
11 GA.**



**PART 5292
SIDE & END CORNER
11 GA.**

OTHER SIZES & MATERIALS ARE AVAILABLE ON REQUEST



**PUNCHING LAYOUT FOR PARTS
5044, 5045, 5073, 5074 & 5245
HOLE SIZE 1 5/8" X 3 1/16"**

HOLE SIZE & SPACING CAN BE VARIED